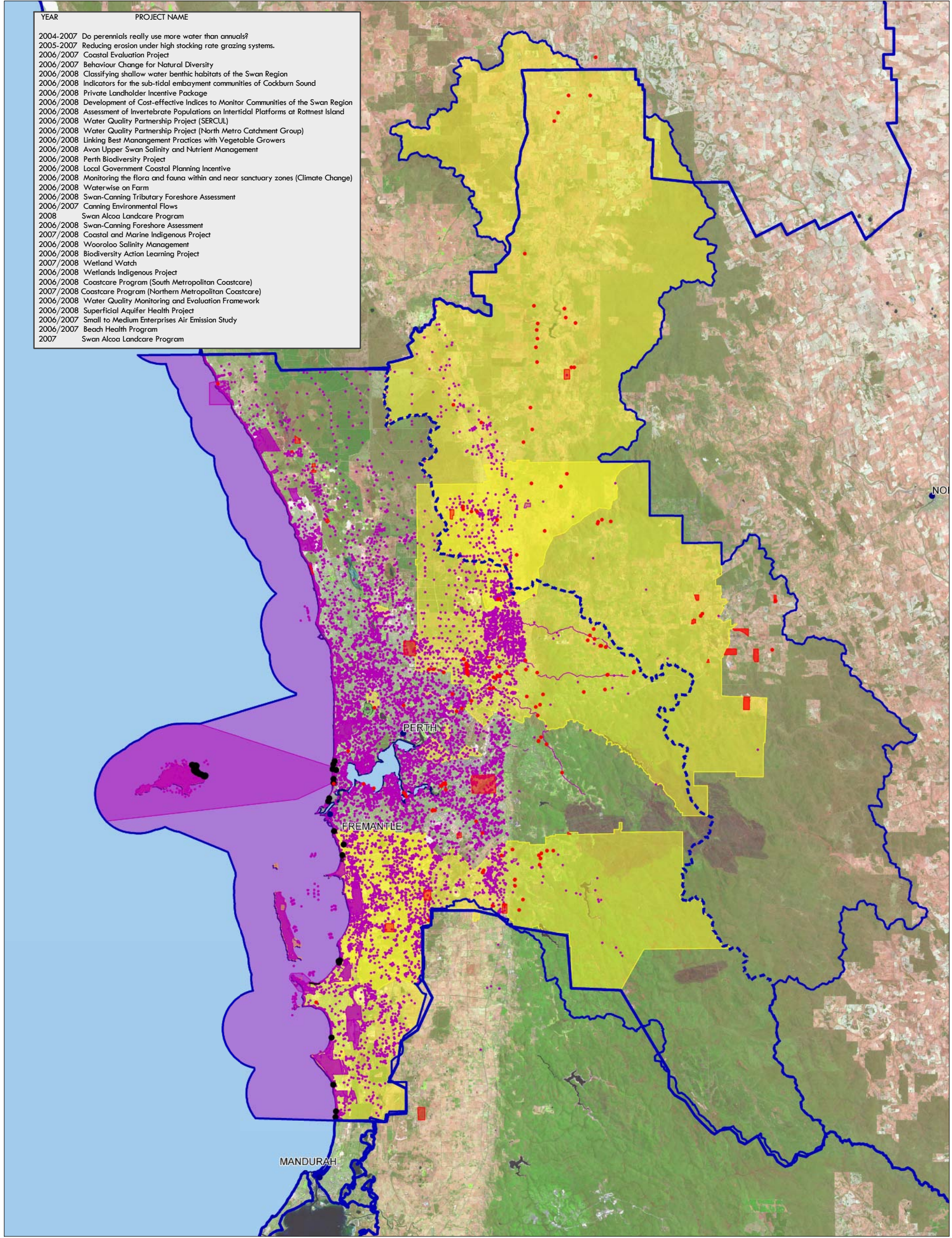









YEAR	PROJECT NAME
2004/2007	Do perennials really use more water than annuals?
2005/2007	Reducing erosion under high stocking rate grazing systems.
2006/2007	Coastal Evaluation Project
2006/2007	Behaviour Change for Natural Diversity
2006/2008	Classifying shallow water benthic habitats of the Swan Region
2006/2008	Indicators for the sub-tidal embayment communities of Cockburn Sound
2006/2008	Private Landholder Incentive Package
2006/2008	Development of Cost-effective Indices to Monitor Communities of the Swan Region
2006/2008	Assessment of Invertebrate Populations on Intertidal Platforms at Rottnest Island
2006/2008	Water Quality Partnership Project (SERCUL)
2006/2008	Water Quality Partnership Project (North Metro Catchment Group)
2006/2008	Linking Best Management Practices with Vegetable Growers
2006/2008	Avon Upper Swan Salinity and Nutrient Management
2006/2008	Perth Biodiversity Project
2006/2008	Local Government Coastal Planning Incentive
2006/2008	Monitoring the flora and fauna within and near sanctuary zones (Climate Change)
2006/2008	Waterwise on Farm
2006/2008	Swan-Canning Tributary Foreshore Assessment
2006/2007	Canning Environmental Flows
2008	Swan Alcoa Landcare Program
2006/2008	Swan-Canning Foreshore Assessment
2007/2008	Coastal and Marine Indigenous Project
2006/2008	Wooroloo Salinity Management
2006/2008	Biodiversity Action Learning Project
2007/2008	Wetland Watch
2006/2008	Wetlands Indigenous Project
2006/2008	Coastcare Program (South Metropolitan Coastcare)
2007/2008	Coastcare Program (Northern Metropolitan Coastcare)
2006/2008	Water Quality Monitoring and Evaluation Framework
2006/2008	Superficial Aquifer Health Project
2006/2007	Small to Medium Enterprises Air Emission Study
2006/2007	Beach Health Program
2007	Swan Alcoa Landcare Program



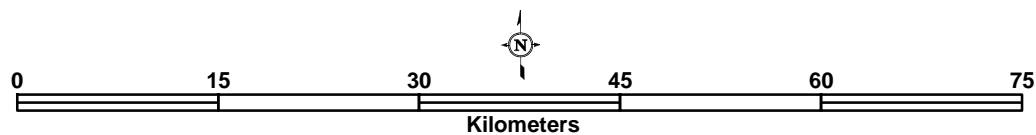
## Perth NRM Region Strategy and Investment Plan Outputs

### Legend

-  NRM Regional Boundaries
-  Pastoral Clearing Line
-  On Ground Outputs
-  Resource Assessment
-  Capacity Building
-  Planning Outputs
-  Indicates multiple outputs at the same location

### Notes:

On ground investment and other outputs represented relate to a series 31 of projects (2006 - 2008) funded under NHT2. Investment sites are limited to on-ground activities provided by the regional NRM groups for inclusion in the State database.



**DISCLAIMER:** While all reasonable care has been taken in the preparation of the material in this document, the Western Australian Government and its officers accept no responsibility for any errors or omissions it may contain, whether caused by negligence, or otherwise, or for any loss, however caused, sustained by any person who relies on it.