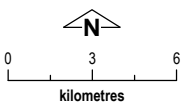
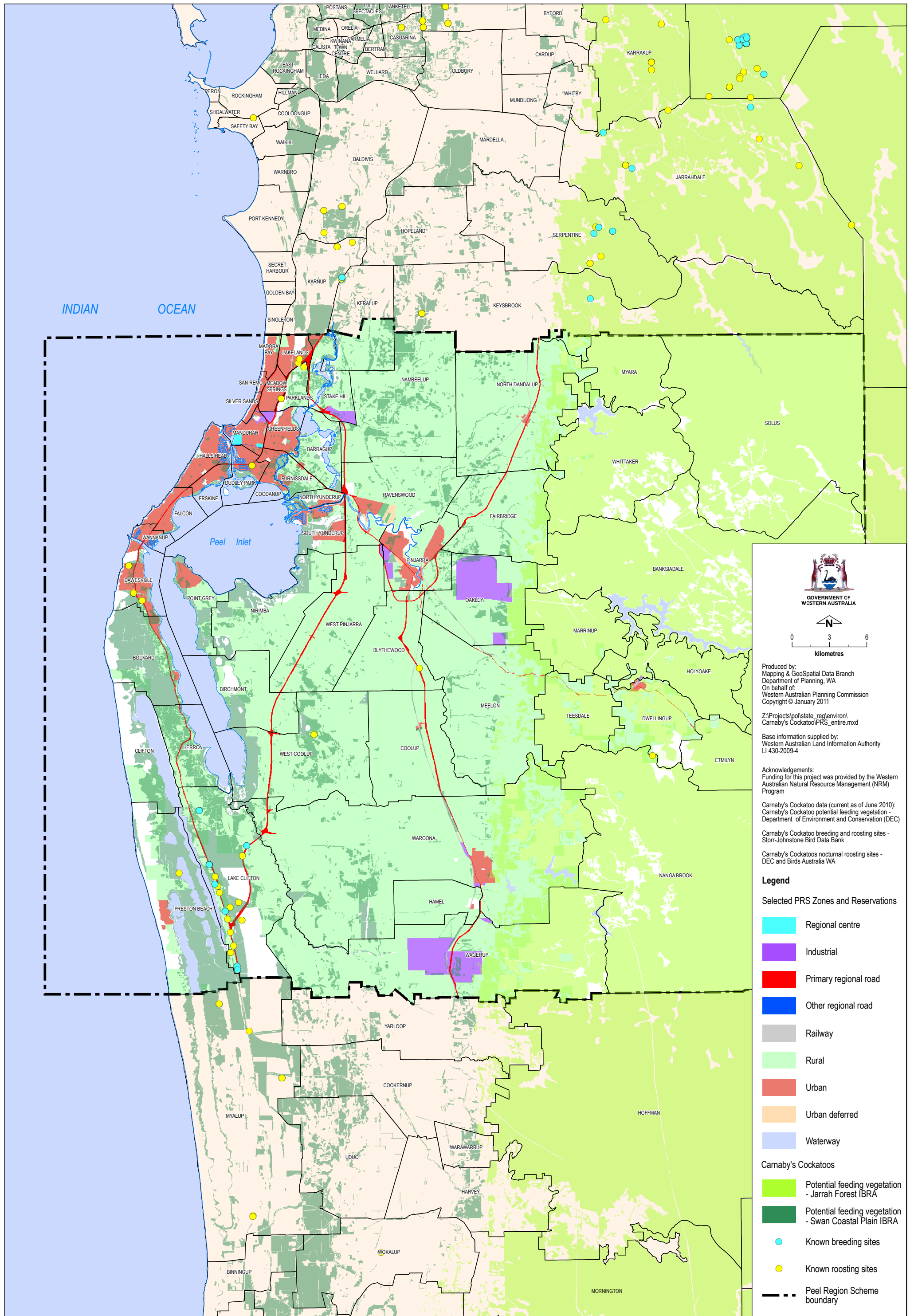


Peel Region Scheme (PRS) - potential habitat for the Carnaby's Black Cockatoo which may require further assesment



Produced by:
Mapping & GeoSpatial Data Branch
Department of Planning, WA
On behalf of:
Western Australian Planning Commission
Copyright © January 2011

Z:\Projects\pol\state_reg\environ\ Carnaby's Cockatoo\PRS_entire.mxd
Base information supplied by:
Western Australian Land Information Authority
LI 430-2009-4

Acknowledgements:
Funding for this project was provided by the Western Australian Natural Resource Management (NRM) Program
Carnaby's Cockatoo data (current as of June 2010):
Carnaby's Cockatoo potential feeding vegetation - Department of Environment and Conservation (DEC)
Carnaby's Cockatoo breeding and roosting sites - Storr-Johnstone Bird Data Bank
Carnaby's Cockatoos nocturnal roosting sites - DEC and Birds Australia WA

- Legend**
- Selected PRS Zones and Reservations**
- Regional centre
 - Industrial
 - Primary regional road
 - Other regional road
 - Railway
 - Rural
 - Urban
 - Urban deferred
 - Waterway
- Carnaby's Cockatoos**
- Potential feeding vegetation - Jarrah Forest IBRA
 - Potential feeding vegetation - Swan Coastal Plain IBRA
 - Known breeding sites
 - Known roosting sites
 - Peel Region Scheme boundary