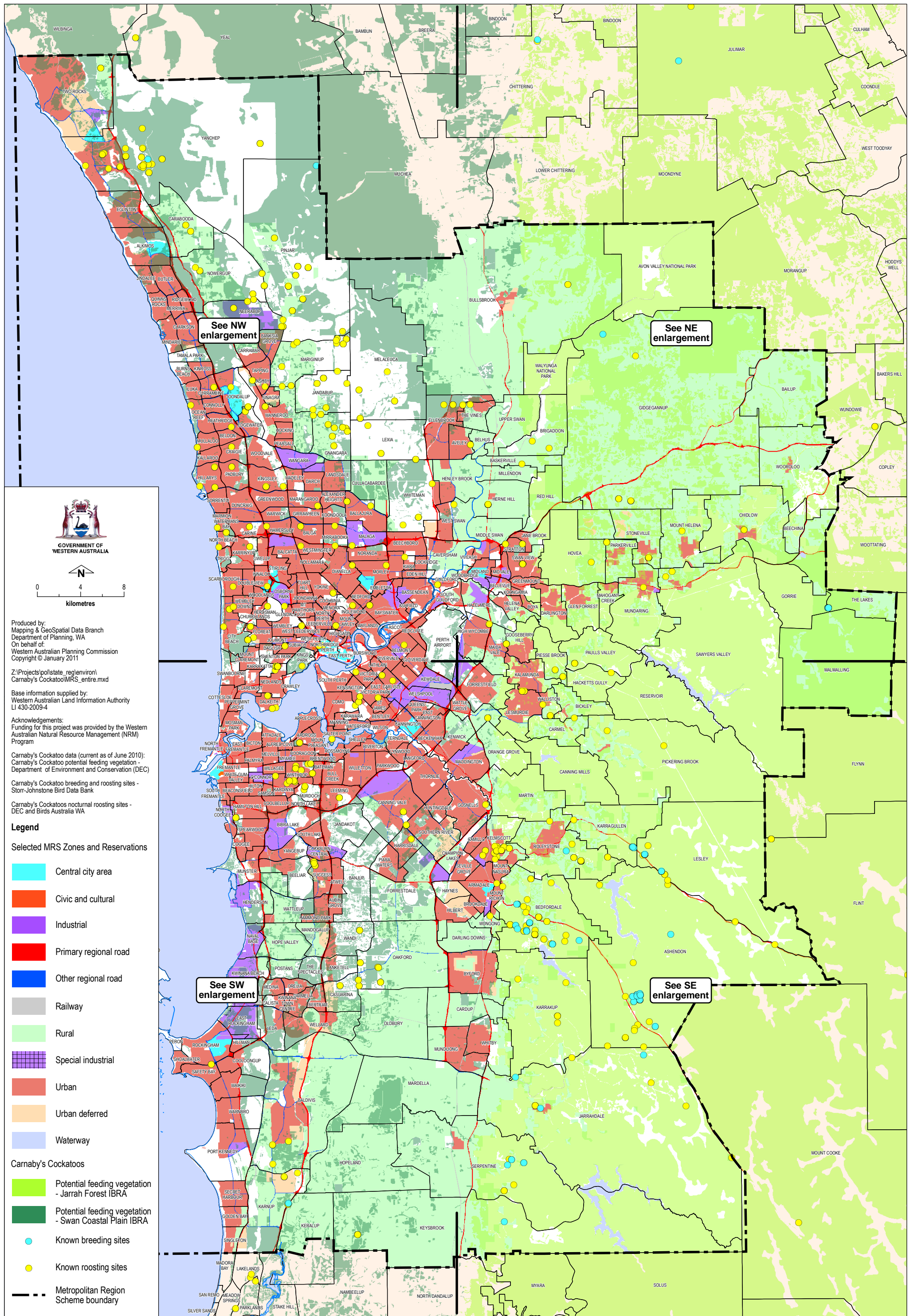


Metropolitan Region Scheme (MRS) - potential habitat for the Carnaby's Black Cockatoo which may require further assesment



GOVERNMENT OF WESTERN AUSTRALIA



0 4 8 kilometres

Produced by:  
Mapping & GeoSpatial Data Branch  
Department of Planning, WA  
On behalf of:  
Western Australian Planning Commission  
Copyright © January 2011

Z:\Projects\polstate\_reg\environ\  
Carnaby's Cockatoo\MRS\_entire.mxd

Base information supplied by:  
Western Australian Land Information Authority  
LI 430-2009-4

Acknowledgements:  
Funding for this project was provided by the Western  
Australian Natural Resource Management (NRM)  
Program

Carnaby's Cockatoo data (current as of June 2010):  
Carnaby's Cockatoo potential feeding vegetation -  
Department of Environment and Conservation (DEC)

Carnaby's Cockatoo breeding and roosting sites -  
Storr-Johnstone Bird Data Bank

Carnaby's Cockatoos nocturnal roosting sites -  
DEC and Birds Australia WA

**Legend**

**Selected MRS Zones and Reservations**

- Central city area
- Civic and cultural
- Industrial
- Primary regional road
- Other regional road
- Railway
- Rural
- Special industrial
- Urban
- Urban deferred
- Waterway

**Carnaby's Cockatoos**

- Potential feeding vegetation - Jarrah Forest IBRA
- Potential feeding vegetation - Swan Coastal Plain IBRA
- Known breeding sites
- Known roosting sites
- Metropolitan Region Scheme boundary